

MW34



# Obstetric Examination Simulator

Simulate prenatal checkups using our 39 to 40 week pregnancy simulator  
All-in-one simulator: Palpation, Auscultation, and Measurement



## FEATURES

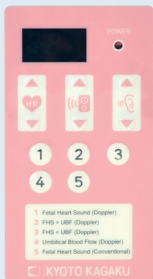
- 1 | Soft, durable and realistic senses of touch
- 2 | Various fetal positions and orientations by rotating the fetal unit
- 3 | Recorded and edited actual fetal heart sounds

## LANDMARKS

- | pubic symphysis
- | navel
- | xiphoid process
- | iliac crest
- | great trochanters

## KEY FEATURES

### Auscultation



**Selection of sounds can be controlled using a remote control for convenient and fast-paced trainings. Actual fetal heart sound recordings can be heard with a stethoscope or projected for group-based sessions.**

#### Five sound variations:

- Stethoscope sounds
  - Fetal heart sounds
- Doppler sounds
  - Fetal heart sounds
  - Umbilical blood flow
  - Umbilical blood flow with fetal heart sounds combined (posterior and anterior)

\*Doppler sounds are to be heard through the external speaker.

#### Controllable parameters

- Control of fetal heart rate (60-180)
- Switch between internal and external speakers

## DESCRIPTIONS

### SPECIFICATIONS

Size: W30 x D 60 x H30 cm/ W11.8 x D23.6 x H11.8 inch    Weight: 11.2 kg / 24.7 lbs

### SET INCLUDES

- 1 pregnancy torso
- 1 AC adaptor
- 1 remote control
- 1 talcum powder
- 1 towel
- 1 instruction manual

### MATERIALS

Soft resin  
Latex free

### REPLACEMENT PARTS

11414-010 skin cover for MW34

### RECOMMENDED DEVICES

-



**KEY FEATURES**

# Palpation

## Palpation of anatomically correct pelvic and fetal landmarks

Innovative tissue-like material!

### Leopold's maneuvers

Palpate parts of the fetus, such as the head, buttocks and trunk using the first to fourth maneuvers.

Determine fetal position and orientation, as well as degrees of fetal descent.

First maneuver

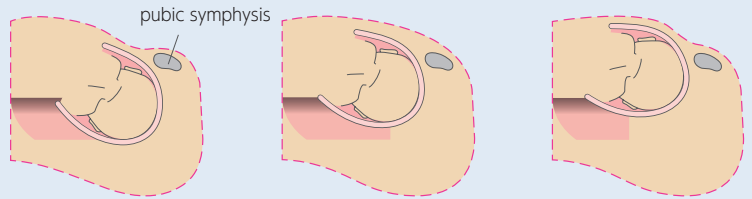


Fourth maneuver



### Cephalopelvic disproportion assessment

Practice multiple CPD assessment scenarios. Height of the fetal head against the pubic symphysis can be changed by rotating the fetal unit.



# Measurements

Measure and estimate fetal weight, development and amniotic fluid volume.

Maternal abdominal girth



Fundal height



A variety of external pelvimetries



Distantia spinarum



Distantia cristarum



Distantia trochanterica

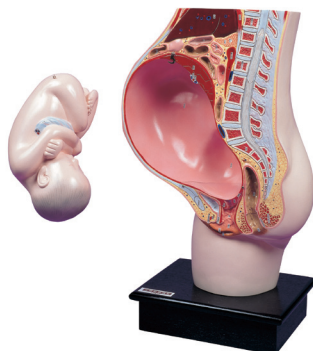


External oblique diameter

A83A

## Pregnant Uterus Model

This model replicates the anatomy of a maternal body at the final stage of pregnancy. The fetus can be removed from the uterus.



A89

## Fetal Development Model Set

This set of embryo models demonstrates regular fetal development in sequence from the 9th to 40th week of pregnancy.

