

US-1B



Ultrasound Examination Training Phantom "ABDFAN"

Abdominal ultrasound phantom with pathologies

Unique high-fidelity abdominal ultrasound phantom that facilitates effective training compatible with your own clinical devices.

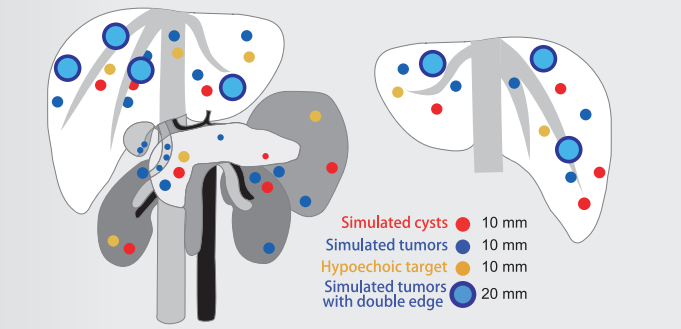
Product Supervision

Junji Machi, MD, PhD
University of Hawaii at Manoa and Kuakini Medical Center



Full set includes anatomical model "ECHO-ZOU"

Simulated lesions in liver, pancreas, kidney, spleen and gallbladder



FEATURES

- 1 | Detailed hepatobiliary, pancreatic and other abdominal anatomy
- 2 | Eight Couinaud's hepatic segments can be localized.
- 3 | ABDFAN has various simulated lesions to provide wider training variety.

SKILLS

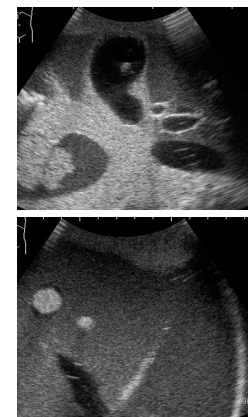
- | Basics of abdominal sonography:
 - Cross sections and sonographic anatomy
 - Sonographic demonstration of each individual organ
 - Localization of hepatic Couinaud's segments

Anatomy

- | Liver (segmental anatomy, portal and hepatic venous systems, ligamentum teres and ligamentum venosum)
- | Biliary tract (gallbladder, cystic duct, intrahepatic and extrahepatic bile ducts)
- | Pancreas (pancreatic duct)
- | Spleen / kidneys
- | Detailed vascular structures (aorta, vena cava, celiac artery and its branches, portal vein and its branches, superior mesenteric vessels, renal vessels, and more)

Pathologies

- | Hepatic lesions (cystic and solid)
- | Gallbladder and bile duct stones
- | Pancreatic tumors (one invading the portal vein)
- | Splenic lesions
- | Both kidney lesions
- | Left adrenal tumor



DESCRIPTIONS

SPECIFICATIONS

Size: 29x19x31cm / 11.4x7x12.2 inch Weight: 12kg / 26.5lbs

MATERIALS

Polyurethane elastomer
Latex free

SET INCLUDES

US-1B (41900-030) "ABDFAN"	US-1B (41900-100) "ABDFAN" full set
1 ultrasound phantom "ABDFAN"	1 ultrasound phantom "ABDFAN"
1 positioning pillow	1 anatomical model "ECHO-ZOU"
1 tutorial manual (DVD)	1 positioning pillow
1 storage case	1 tutorial manual (DVD)
1 instruction manual	1 storage case
	1 instruction manual

