

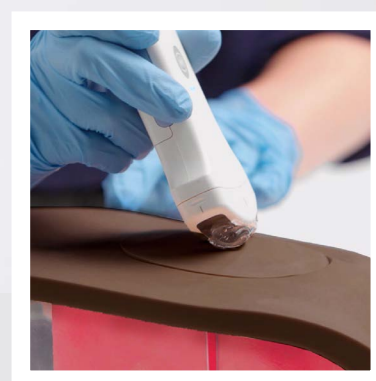
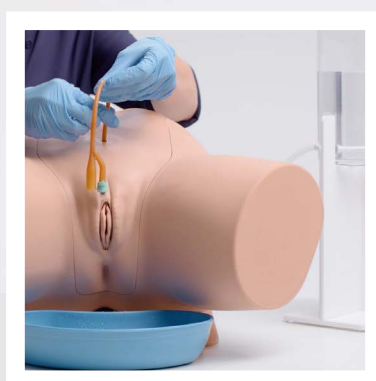
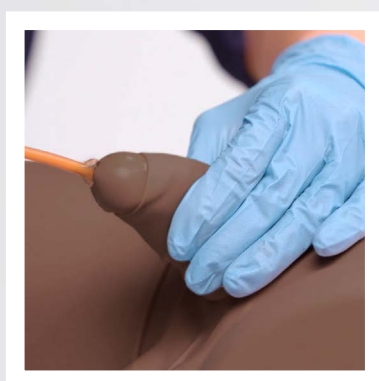


CATHETERISATION TRAINER RANGE

The Catheterisation Range facilitates the teaching of urethral and suprapubic catheterisation across all levels of training.

Interchangeable modules allow practice of the fundamental procedures of male and female urethral catheterisation, as well as more advanced skills of suprapubic management and ultrasound guided insertion.

60850	60870	MALE CATHETERISATION TRAINER
60851	60869	FEMALE CATHETERISATION TRAINER
60852	60873	SUPRAPUBIC INSERTION (ULTRASOUND GUIDED) UNIT



Learning has never been more lifelike

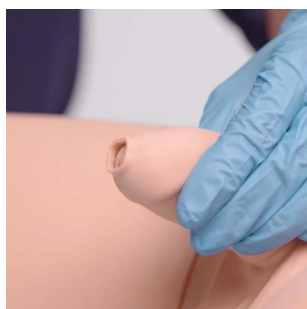
limbsandthings.com



The anatomically accurate trainers include a supple urethra and resistant sphincter providing a closer to life training experience.

The ability to view catheter path gives trainees and teachers real time feedback on the location and progress of the procedure.

60850 **60870** MALE CATHETERISATION TRAINER

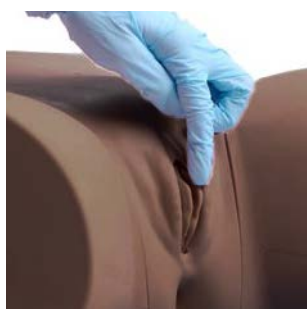


The male trainer has soft and compliant genitalia to enhance the realistic experience of catheter insertion.

Replaceable & removable foreskin.



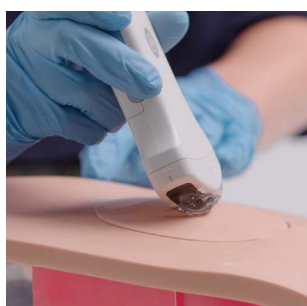
60851 **60869** FEMALE CATHETERISATION TRAINER



The female trainer has soft labia allowing trainees to practise parting using the aseptic no touch technique, as well as management and care of a pre-inserted suprapubic catheter via the pre-reported bung.



60852 **60873** SUPRAPUBIC INSERTION (ULTRASOUND GUIDED) UNIT



Optional module, designed for advanced skills training, allowing trainees to master ultrasound guided suprapubic catheterisation insertion.

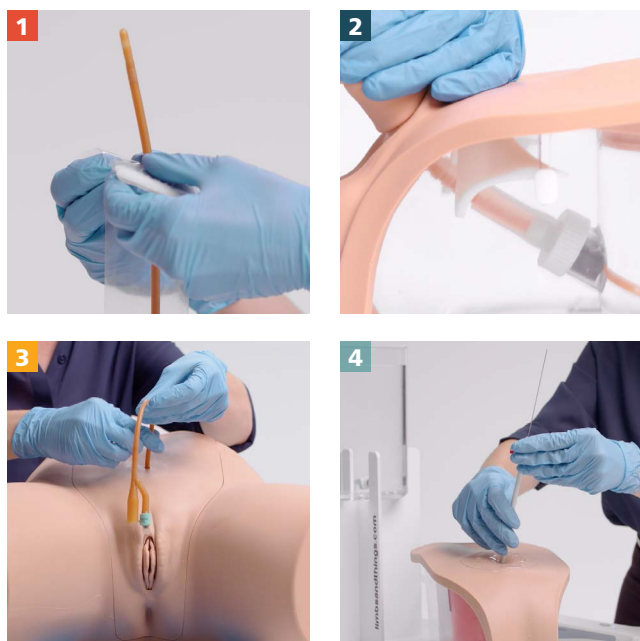
Fits into 60850/60870 & 60851/60869



SKILLS

- Correct handling of male and female anatomy
- Aseptic catheterisation technique
- Withdrawal of catheter
- Urinary catheterisation
- Suprapubic catheter management - Female module
- Suprapubic catheter insertion (blind and ultrasound guided)*
- Ultrasound bladder scanning on a full bladder*
- Fluid management

* 60852/60873 Only



- Aseptic catheterisation technique
- Ability to view catheter path when module used without pelvic shell
- Suprapubic management
- Suprapubic catheter insertion

QUALITIES

REALISM

- Supple urethra & resistant sphincter providing realistic response
- Flaccid penis and removable foreskin
- Vaginal opening and realistic urethral meatus
- Anatomically accurate bladder

KEY FEATURES

- Ability to assess the students progress
- Ultrasound compatible*
- Easy to set-up
- Non-drip valve
- Modular

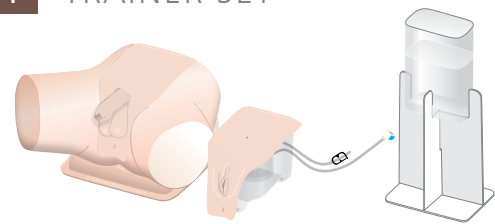
VERSATILITY

- Easily interchangeable male, female and suprapubic catheterisation modules
- Removable foreskin

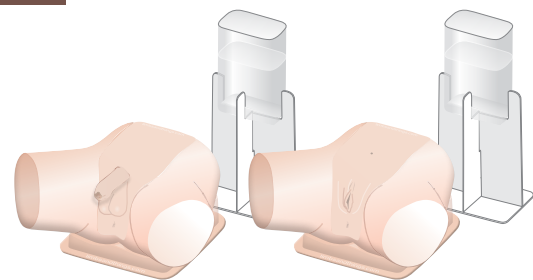
SAFETY

- Trainer is latex free (catheters provided contain latex)

60853 STANDARD CATHETERISATION TRAINER SET



60854 ADVANCED CATHETERISATION TRAINER SET



WHAT'S INCLUDED

	60850	60851	60852	60853	60854
	60870	60869	60873	60871	60872

Male Catheterisation Module	✓	×	×	✓	✓
Female Catheterisation Module	×	✓	×	✓	✓
Suprapubic (Ultrasound) Catheterisation Module	×	×	✓	×	×
Suprapubic Insertion Bungs (x2)	×	×	✓	×	×
Catheterisation Foreskins (x3)	✓	×	×	✓	✓
Aseptic Catheterisation Sleeves (x2)	✓	✓	×	✓	✓(x2)
Water System	✓	✓	✓	✓	✓(x2)
Pelvic Shell & Stand	✓	✓	×	✓	✓(x2)
Water Extension Tubing	✓	✓	×	✓	✓(x2)
Limbs & Things Lubricant	✓	✓	×	✓	✓(x2)
Antifungal Agent (Milton Sterilising Fluid)	✓	✓	✓	✓	✓(x2)
14 French Foley Catheter	✓	✓	×	✓	✓(x2)
Plastic Kidney Dish	✓	✓	×	✓	✓(x2)

CURRICULUM REFERENCES

UK

MEDICAL UNDERGRADUATE

Outcomes for Graduates (Tomorrow's Doctors), 2016, Appendix 1 Practical Procedures for Graduates, p.14.

PRE-REGISTRATION NURSING

Future nurse: Standards of proficiency for registered nurses, 2018, p.35.

POST GRADUATE NURSING

Catheter Care Guidance for RCN Nurses, Second Edition, 2012, p.12,29,33.

PHYSICIAN ASSOCIATE

Competence and Curriculum Framework for the Physician Assistant, 2012, 2.4 Specification of core procedural skills.

POSTGRADUATE MEDICINE FY1 & FY2

Foundation Programme Curriculum, 2012, updated for 2016, Procedures, p.50.

GENERAL SURGERY SPECIALIST TRAINING

ISCP General Surgery Curriculum, 2013, p. 58-66.

UROLOGY SPECIALIST TRAINING

ISCP Urology Syllabus, August 2010, p.25.

SPECIALIST INTENSIVE CARE MEDICINE TRAINEES

Intensive Care Medicine Syllabus Part III, Assessed by Direct Observation of procedural Skills [DOPS] and examination, 2014, p. 3.

EMERGENCY MEDICINE TRAINEES

THE COLLEGE OF EMERGENCY MEDICINE Curriculum and Assessment Systems for Core Specialty Training, ACCS CT1-3 & Higher Specialty Training ST4-6, 2015, p.114, 252.

TRAUMA & ORTHOPAEDIC SURGERY TRAINEES

Specialist Training in Trauma and Orthopaedics Curriculum August, 2014, p.228, 232.

HEALTHCARE ASSISTANTS

Catheter Care Guidance for RCN Nurse, Second Edition, 2012, p.51.

USA

UNDERGRADUATE MEDICINE

AAMC Clinical Skills for UME, 2005, p. 30.

UNDERGRADUATE NURSING

Fundamentals of Nursing 9th ed., 2017, p. 1131-1144.

POSTGRADUATE NURSING

Advanced Practice Nursing Procedures, 2015.

PHYSICIAN ASSOCIATE

Essential Clinical Procedures, 3rd Ed., 2013, p. 156-165.

FAMILY MEDICINE

AAFP Residency Guidelines, Critical Patient, 2015, p. 9.

GENERAL SURGERY

ACGME General Surgery Milestones, 2019, p. 8.

PARAMEDICS

National Emergency Medical Services. Education Standards, Paramedic Instructional Guidelines, 2009, p. 221.

CERTIFIED SURGICAL TECHNOLOGISTS / FIRST ASSISTANTS

Association of Surgical Technologists, Standards of Practice for Urinary Catheterization, 2017, p. 6-7.

AUS/NZ

UNDERGRADUATE MEDICINE

Undergraduate Medicine - Medical Deans' Competencies Report, Medical Graduate Competency Framework Stage 2 Final Report, 2012, p. 9.

UNDERGRADUATE NURSING

Undergraduate Nursing - ACI Urology Network, 2013.

JUNIOR DOCTORS

CPMEC Australia Curriculum Framework for Junior Doctors: Skills and Procedure, 2006, p. 2..

PARAMEDICS

Paramedics Australasia: Paramedicine roles: General Care Paramedic, 2018.

SPECIALIST GP TRAINEES

RACGP Curriculum for Australian General Practice, Men's Health, 2011, p.143.

Int V.3 Jan 2022



REQUEST A QUOTE



REQUEST A DEMO



CUSTOMER SUPPORT

limbsandthings.com