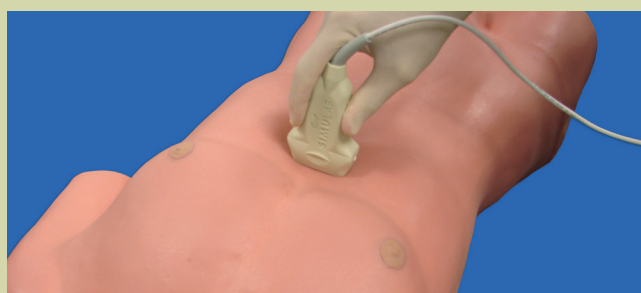
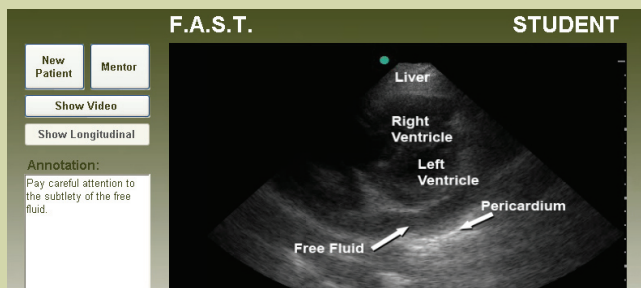


SonoMan™ SYSTEM

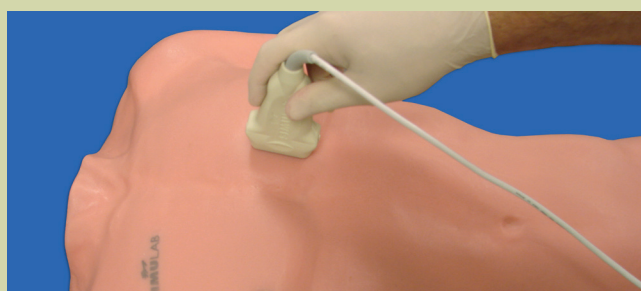
This ultrasound trainer provides an affordable platform for teaching students how to read diagnostic ultrasound imaging. The system includes a soft tissue body form with internal and external landmarks and a simulated probe. The torso has 258 unique probe locations providing a normal image for each window. The system's software platform allows users to expand SonoMan's capabilities with additional training modules.



SIMULATED PROBE PLUGS INTO PC



REAL PATIENT IMAGES AND VIDEO



BODY FORM EMBEDDED WITH 258 PROBE LOCATIONS

SONOMAN FEATURES:

- > Simulated ultrasound probe that plugs into a PC
- > Software that allows any PC to simulate an ultrasound machine*
- > Body form with embedded targets for each of the viewing windows, depending on the module
- > Transverse and longitudinal viewing options
- > All images and videos are of actual patients – both normal and abnormal
- > Mentor mode allows users to activate the onscreen labels of any of the digital images
- > Each module includes an instructor (teaching) and student (exam) mode.

* PC/Laptop not included

TRAINING MODULES (sold separately):

- > FAST Module
- > eFAST Module
- > AAA Module
- > Echo Module
- > Renal Module
- > Gallbladder Module

CONTACT US:

+27 11 792 2190
 +27 11 793 4234
 info@medtec.co.za